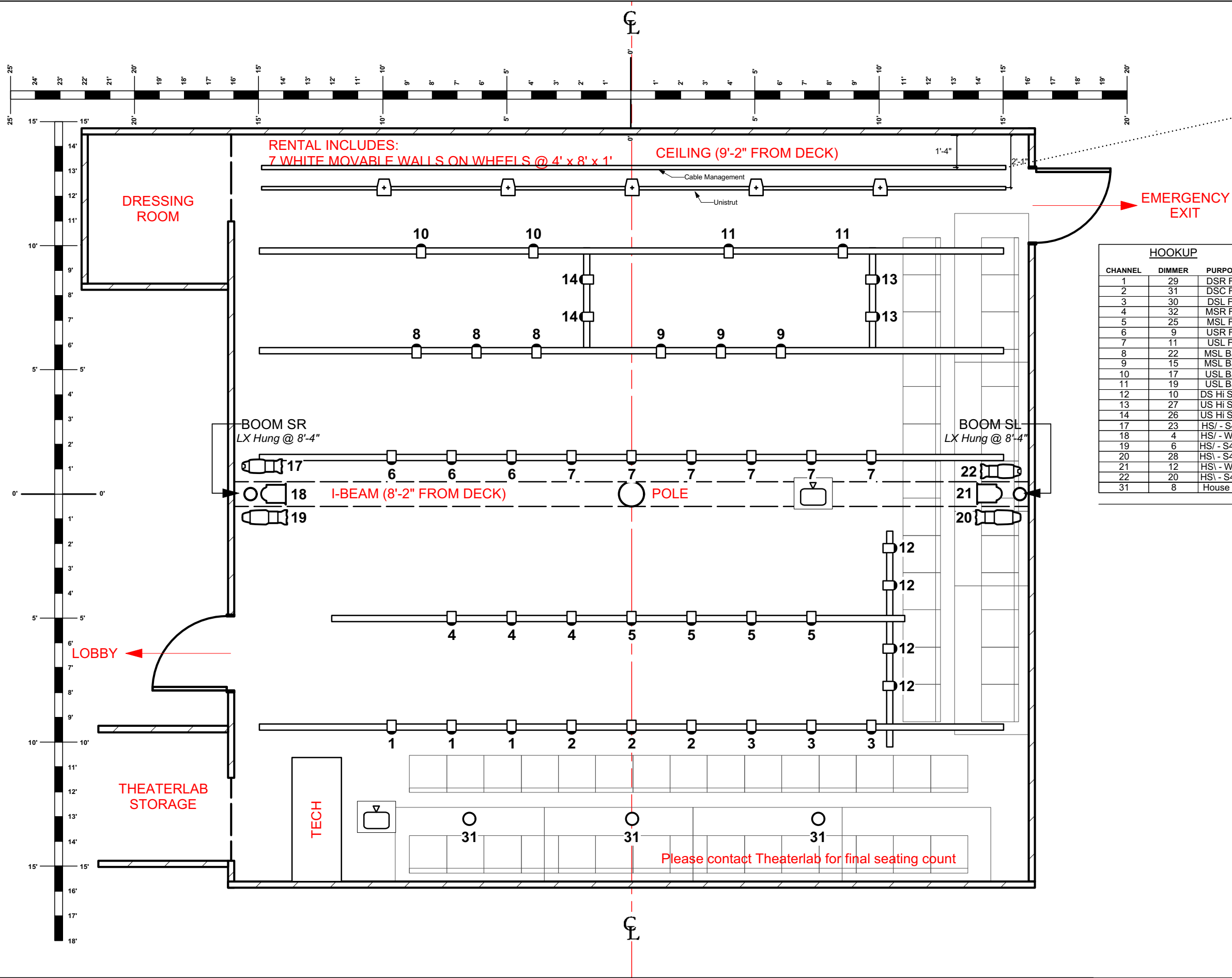
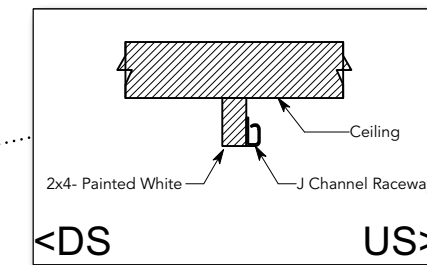


Cable Management Section Detail



**HOOKUP**

CHANNEL	DIMMER	PURPOSE
1	29	DSR Frt
2	31	DSC Frt
3	30	DSL Frt
4	32	MSR Frt
5	25	MSL Frt
6	9	USR Frt
7	11	USL Frt
8	22	MSL Bax
9	15	MSL Bax
10	17	USL Bax
11	19	USL Bax
12	10	DS Hi Side
13	27	US Hi Side
14	26	US Hi Side
17	23	HS/ - S4 Jr
18	4	HS/ - Wash
19	6	HS/ - S4 36
20	28	HS/ - S4 36
21	12	HS/ - Wash
22	20	HS/ - S4 Jr
31	8	House LX



# Inventory

## Furniture:

- 7 movable walls on wheels, each 4' w x 8' h x 1' d
- 2 V-flat panels, white
- 8 3' w x 6' l riser platforms for chair arrangement, white
- 5 Foldable 6 ft tables
- 1 42" round table white
- 1 42" foldable black square table
- 2 4' l white table on wheels
- 1 4' l white table
- 60 chairs and stools (all white) : 30 Bellini chairs, 24 IKEA Vilmar chairs, 14 baby IKEA Franklyn stools , 14 tall IKEA Franklyn stools

## Lighting Equipment

- 2 Floor booms on stands, 4' h
- 2 Floor booms on stands, 5' h
- 3 Source 4 50's
- 1 Source 4 36's
- 4 Fresnels
- 42 Par 64 (small birdies with SATCO LED bulbs)
- 6 Hanging incandescent bulbs (house lights)
- 1 ETC Expression light board

## Sound Equipment

- 4 JBL speakers (installed, hanging from ceiling)
- 1 Crown XLS 100 Amp
- 1 Yamaha MG124cx mixing console
- 1 Aux Out Cable

- 1 Microphone
- 1 Mic Stand

### **Video Equipment**

- 1 Ben Q Projector (MX620ST) with remote short-throw\*
- 1 EPSON (H592A) with remote, ceiling-mounted
- 1 EPSON Home Cinema 660 with remote, ceiling-mounted
- 1 9' h x 12' l projector screen, wall-mounted

### **Additional Inventory**

- 2 6' coat racks
- 1 3' coat rack
- 2 power strips
- 2 10' extension cords
- 5 practical lamps
- 1 20' x 20' white glossy marley floor
- 1 Macbook Air laptop (13"), with Qlab software\*
- 10 music stands (5 white, 5 black)
- 1 50' HDMI cord, connected in the plot (black)
- 2 15' HDMI cord, connected in the plot (white)
- 1 6' HDMI cord (white)
- 3 rolls of 20' x 5' astroturf
- 1 small refrigerator
- 120 white plastic stackable milk crates, available for storage or set building